



## WOMEN CHEF COAT

Article No.1904SA479

Womens Chef Coat are built to last and stand up to the most demanding culinary environments. These chef coats are designed to wash, wear & perform, while offering the same style, fit and functionality you expect from Chef works.

Constructed with 7.0 oz., 65/35 poly/cotton twill fabric. This is a short sleeve, mandarin collar, double-breasted chef coat with and pearlized buttons.

The Chef Coat has a left chest patch and thermometer pockets. Available in black & white.



### COMPOSITION

Fabric: 65% Polyester, 35% Cotton Twill  
Weight: 7.0 Oz

### STYLE & DESIGN

- Double-breasted front with 10 Pearlized button closure
- Double needle stitching
- Left chest patch pocket
- Thermometer pocket on the sleeve
- Long sleeves with turned back round french cuff
- 6" vents/slit on sides
- Mandarin collar
- Stain-resistant finish
- Lightweight
- Durable construction

### COLORS



### SIZES

XS to 5XL

Doc. Control:	Rev.:	Date:
	3.2	April 7, 2016

This Article Data Sheet (ADS) is designed and produced by FLOWTRONIX (FT) covered under the intellectual property law. Any reproduction in whole or in part is strictly prohibited without written approval. FT IW 7092-3.2

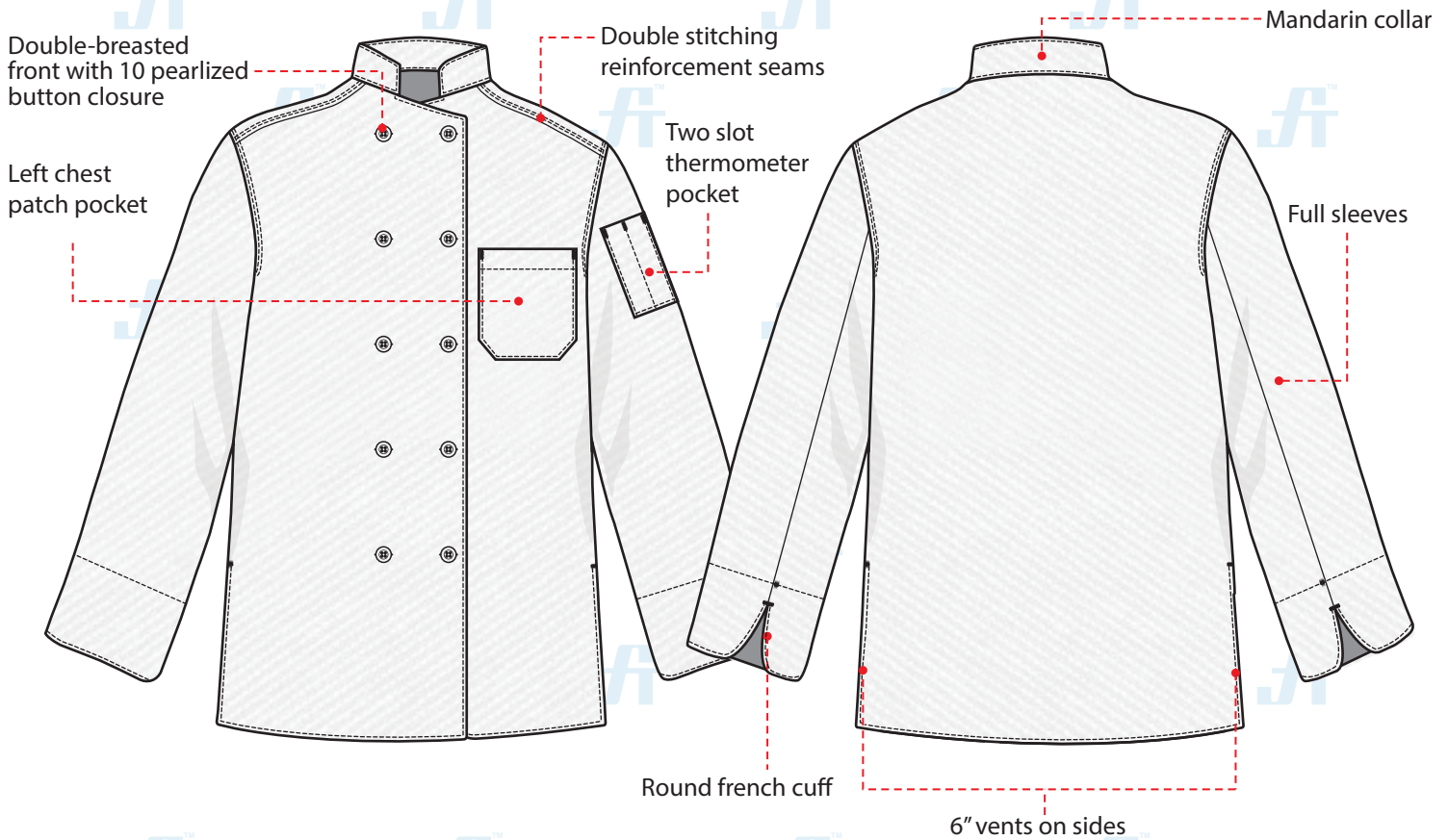




# WOMEN CHEF COAT

Article No.: 1904SA479

## STYLE & DESIGN SPECIFICATIONS



### COLORS



### SIZE CHART

XS	S	M	L	XL	2XL	3XL	4XL	5XL
----	---	---	---	----	-----	-----	-----	-----

### PPE CUSTOMIZATION PROGRAM



- Style and colour as per Client's requirements can be produced
- Name badge/ Designation/Logo placement

### PACKING

Each piece in polythene cover and 20 pcs. in seaworthy carton

Doc. Control:	Rev.: 3.2	Date: April 7, 2016
---------------	-----------	---------------------

This Article Data Sheet (ADS) is designed and produced by FLOWTRONIX (FT) covered under the intellectual property law. Any reproduction in whole or in part is strictly prohibited without written approval. FT IW 7092-3.2

