

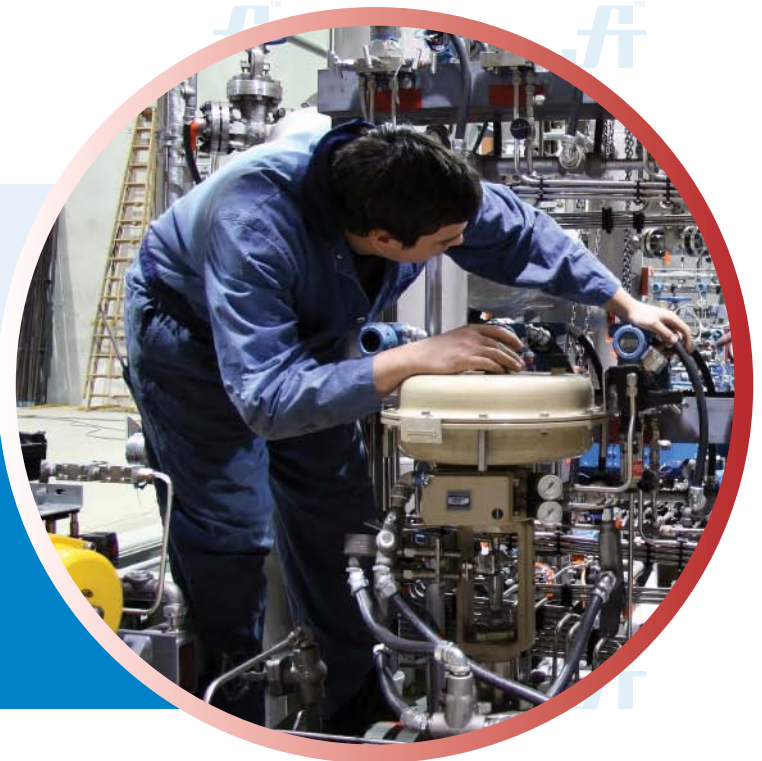


WORK COVERALL

Article No.: 0101FT192

Buckler® Premium Workwears are made from 100% cotton fabric that is durable press-finish, follow process at highest standards. Fully mercerized, wrinkle resistant and very breathable. Gives best comfort to users on various working environments.

A generous fit to shoulders and chest, action back, has eight (8) pockets design, two way zipper closure on front. Available on different colors and can be customized as required.



COMPOSITION

Fabric: 100% Cotton

Weight: 240 gsm

Fully mercerized, wrinkle resistant, durable press finish & very breathable.

STYLE & DESIGN

- 8 Pockets Design
Two chest angled pockets with flap zip closure/ Two side pockets/ Two rear pockets, one with flap on the right / One tool pocket on the right leg / Mobile & Pen pocket on left sleeve
- Two way heavy duty metallic zipper, snap button & storm flap closure
- Full sleeves with adjustable cuffs
- Snap button neck closure with hanging hook on collar
- Elastic side waist
- Double stitched bi-swing back
- All metal parts are fully concealed
- All stress points are bar tacked
- Color fastness 4-5 & Easy care



PPE CUSTOMIZATION PROGRAM

KEY FEATURES



100% Cotton



Breathable



Wrinkle Resistant



Suitable for Industrial Laundry

Doc. Control:	Rev.:	Date:
	3.2	April 6, 2016

This Article Data Sheet (ADS) is designed and produced by FLOWTRONIX (FT) covered under the intellectual property law. Any reproduction in whole or in part is strictly prohibited without written approval. FT IW 7082-3.2

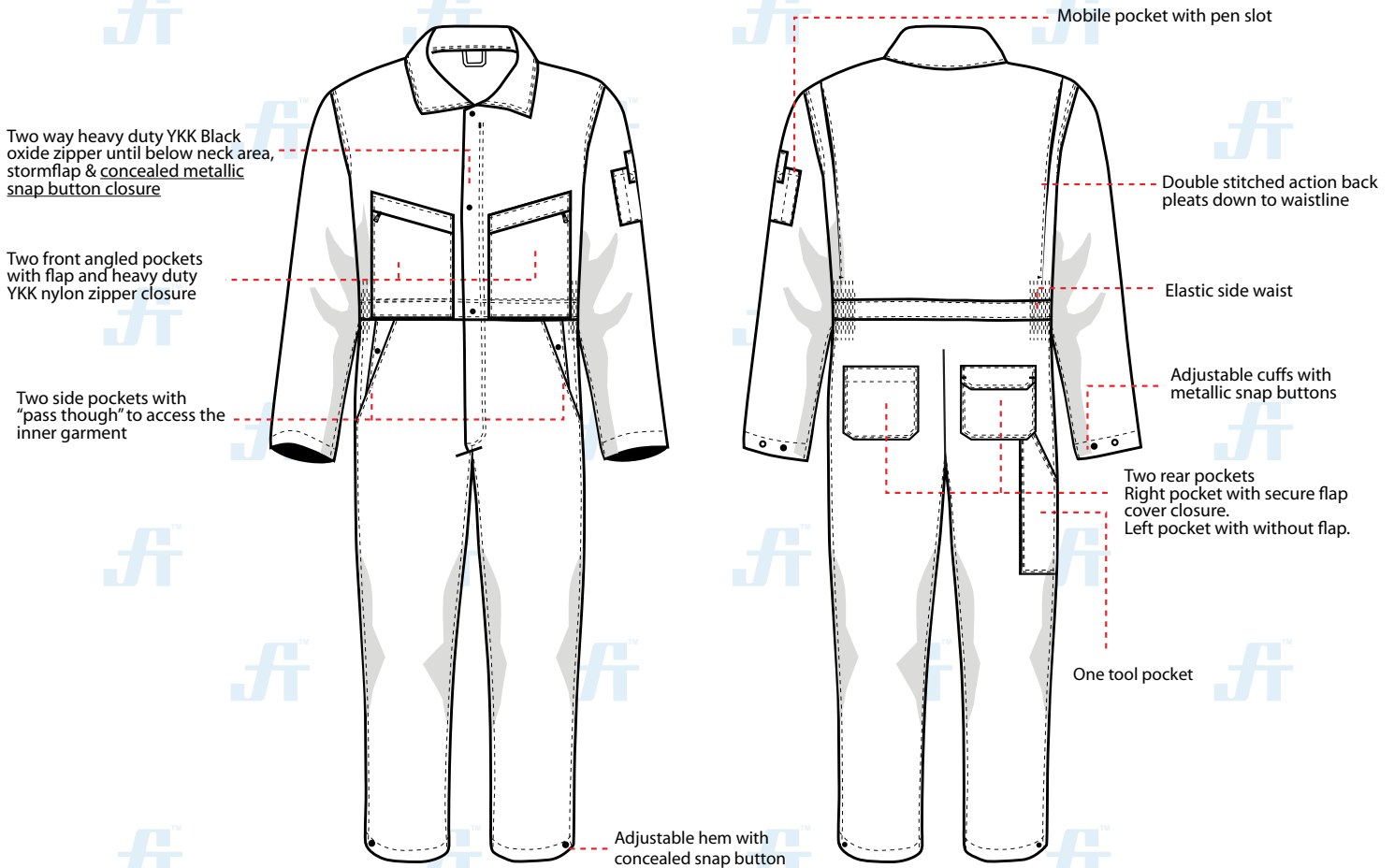




WORK COVERALL

Article No.: 0101FT192

STYLE & DESIGN SPECIFICATIONS



COLOURS



SIZE CHART

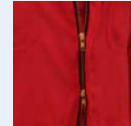
S	M	L	XL	2XL	3XL	4XL
36-38	40-42	44-46	48-50	52-54	56-58	60-62

PPE CUSTOMIZATION PROGRAM

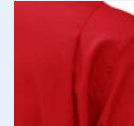


- Style and colour as per Client's requirements can be produced.
- Computerized embroidered company logo, name badges & job designation.
- EN 471 High-Viz Reflective Tape

COMPONENTS



Two way heavy duty metallic zipper, snap button & storm flap closure



Action back allowing maximum body movement



Concealed elastic waist side

PACKING

Each piece in polythene cover and 20 pcs. in seaworthy carton

Doc. Control:	Rev.:	Date:
	3.2	April 6, 2016

This Article Data Sheet (ADS) is designed and produced by FLOWTRONIX (FT) covered under the intellectual property law. Any reproduction in whole or in part is strictly prohibited without written approval. FT IW 7082-3.2

