



## WORK TROUSERS

Article No.: 0453PL01

Parma™ FR Cotton Workwears offers a high level of protection to welders without being as heavy as the leather alternative. This can be an advantage on worksites with high temperature & humidity levels. Constructed using cotton plus & nylon with Proban® FR Finish. Parma™ features flame-retardant properties, thermal protection, comfort and durability that meet industry workwear regulations.



**SVALIN®** is a durable, lightweight and comfortable treated flame retardant fabric with the advantages of the superior breathability and absorbency. Like other natural fabrics, **SVALIN®** provides durable and affordable flash fire protection for workers in the petroleum, petrochemical and other professionals that may be exposed to flash fire. The fabric absorbs and transmits moisture away from the body to keep the wearer dry & comfortable and performs well in a variety of climate applications. It is particularly suitable for use in warm working environments and climates including humid or summer season.

### COMPOSITION

Fabric Grade: SVALIN® SV 700  
 Fabric Blend: 88% Cotton / 12%Nylon with Proban FR Finish, Twill Weave  
 Fabric Weight: 240 gsm or 7.0 oz

### STYLE & DESIGN

- Two front deep inset pockets
- Two large rear welt pockets with flap
- Belt loops
- Bar tacked stress points
- Heavy duty metallic zipper, hook and button closure
- Pleated front & permanent sewn crease line
- Diamond crotch allowing maximum body movement
- Garment is stitched with FR thread
- Colour Fastness 4-5 and Easy care
- All metal parts fully concealed



PPE CUSTOMIZATION PROGRAM

### INTERNATIONAL STANDARDS

Garment is certified to:

- EN ISO 11612 - A1+ A2, B1, C1, F1
- EN ISO 11611
- NFPA 2112 & 70E
- ASTM (11 cal/cm<sup>2</sup>) - CAT 2



**SVALIN®**

**PROBAN**



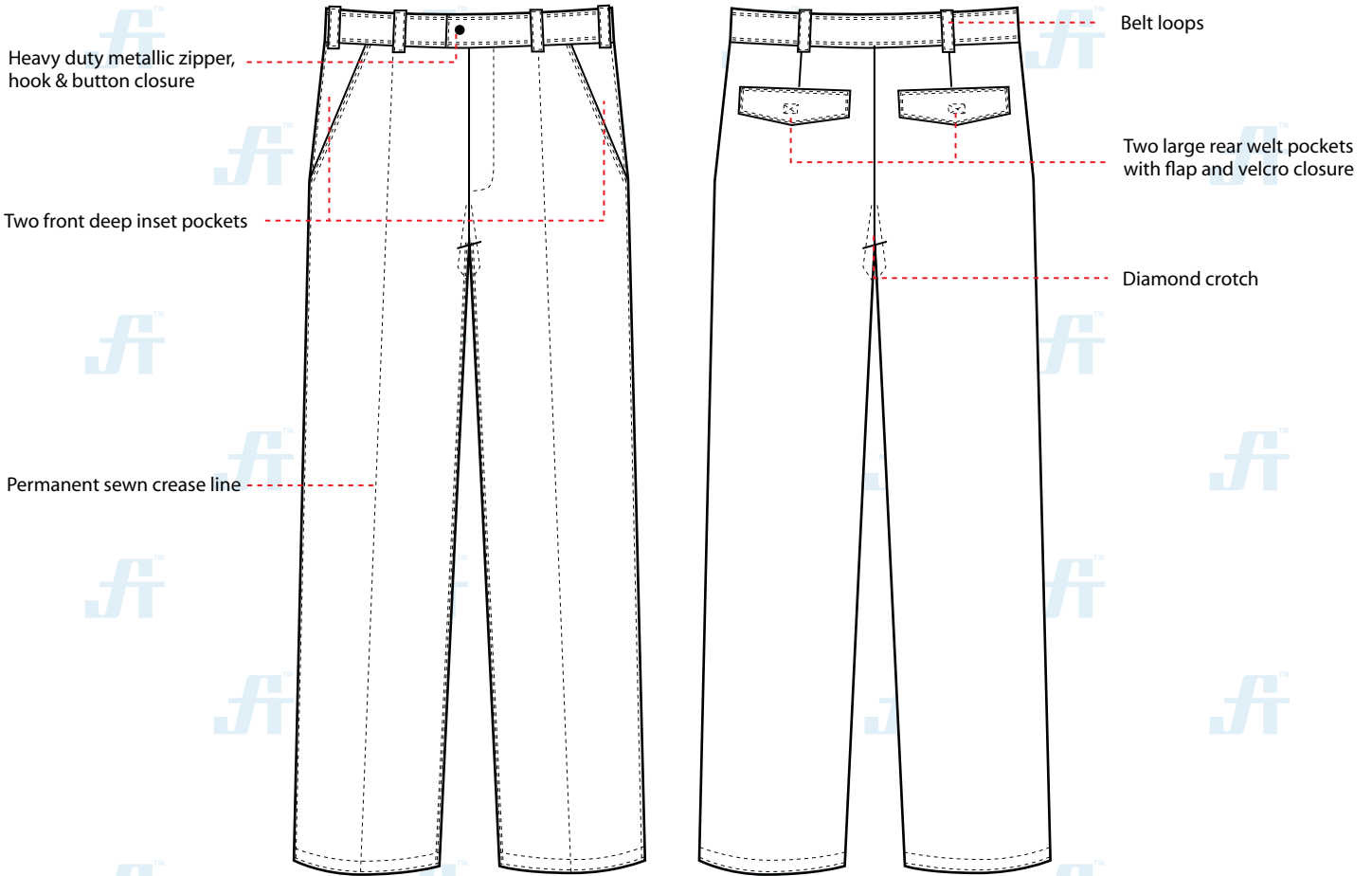
A PRODUCT OF



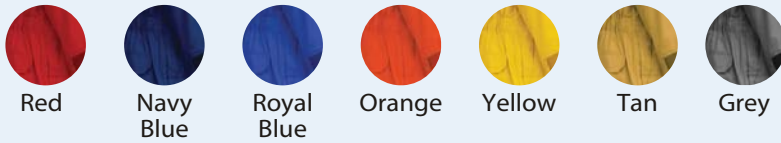
Doc. Control:	Rev.:	Date:
	3.2	April 3, 2016

This Article Data Sheet (ADS) is designed and produced by FLOWTRONIX (FT) covered under the intellectual property law. Any reproduction in whole or in part is strictly prohibited without written approval. FT FR 6235-3.2

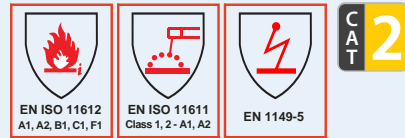
### STYLE & DESIGN SPECIFICATIONS



### COLOURS



### INTERNATIONAL STANDARDS



### SIZE CHART

Size	24	26	28	30	32	34	36	38	40	42	44	46	48	50	52	54	56	58	60	62
Waist	26"	28"	30"	32"	34"	36"	38"	40"	42"	44"	46"	48"	50"	52"	54"	56"	58"	60"	62"	64"
Inseam	30.5"	30.5"	31"	31"	31.5"	31.5"	31.5"	31.5"	31.5"	31.5"	31.5"	31.5"	31.5"	31.5"	31.5"	31.5"	32"	32"	32"	32"

### PPE CUSTOMIZATION PROGRAM



- Style and colour as per Client's requirements can be produced.
- Computerized embroidered company logo, name badges & job designation.
- EN 471 High-Viz Reflective Tape

### PACKING

Each piece in polythene cover and 20 pcs. in seaworthy carton

### PACKING

Each piece in polythene cover and 20 pcs. in seaworthy carton

### COMPONENTS



Heavy duty metallic zipper, hook & button closure



Pleated front & permanent sewn crease line



Diamond crotch allowing maximum body movement

**SVALIN®**

**PROBAN**



A PRODUCT OF



Doc. Control:	Rev.:	Date:
	3.2	April 3, 2016

This Article Data Sheet (ADS) is designed and produced by FLOWTRONIX (FT) covered under the intellectual property law. Any reproduction in whole or in part is strictly prohibited without written approval. FT FR 6235-3.2