



## WOMEN'S WORK COAT

Article No.: 06154FT01-WC-W

**Flash Armor**® inherently flame-retardant and high temperature resistant garments do not support combustion in the air, melt or drip due to their molecular structure and its flame retardant characteristics cannot be washed away. Our range is designed to cater for working conditions around the world as garments are offered in various designs and options.

Flame resistant clothing made with **Flash Armor**® provides valuable peace-of-mind, which enables those who wear it to focus on the job at-hand & perform to their fullest potential.



### HIGH DURABILITY TOGETHER WITH HIGH COMFORT

The lightweight fabric with heavyweight performance. New levels of wearer comfort, you have to feel it to believe it. As the name suggests, durability is a major feature ensuring a long-lasting garment.

- Permanently flame-resistant
- Permanently antistatic
- Extremely durable
- Excellent hand and comfortable garment

### COMPOSITION

**Fabric Grade:** Targa® TRG 500  
**Composition:** 45% Meta aramid / 44% FR Lenzing / 10% Polyamide / 1% Antistatic  
**Fabric Weight:** 165 gsm or 4.9 oz

### STYLE & DESIGN

- Single Layer Work Coat
- Heavy duty metallic zipper, snap button & storm flap closure
- Two side pockets
- Adjustable cuffs with concealed metallic snap button closure
- Above knee length
- Bar tacked stress points
- Double stitched with Nomex® Thread
- Colour fastness 4-5 & Easy care



PPE CUSTOMIZATION PROGRAM

### INTERNATIONAL STANDARDS

- EN ISO 11612:2008 (A1, A2, B1, C1, F1)
- EN 1149-5:2008
- EN 61482-1-1
- NFPA 2112:2012
- ATPV (6,4 Cal/cm<sup>2</sup>) - CAT 1



**TARGA**®



A PRODUCT OF



Doc. Control:	Rev.:	Date:
	3.2	April 2, 2016

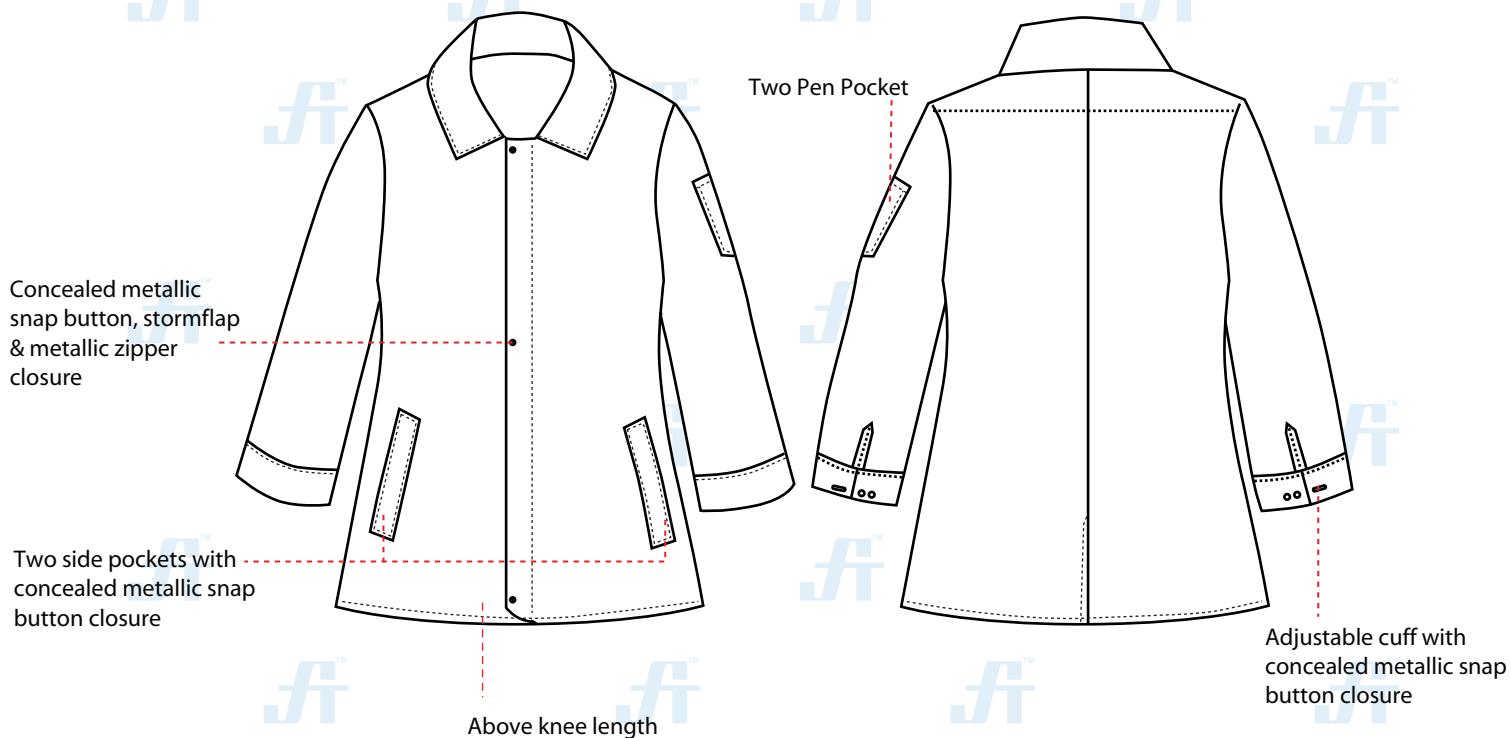
This Article Data Sheet (ADS) is designed and produced by FLOWTRONIX (FT) covered under the intellectual property law. Any reproduction in whole or in part is strictly prohibited without written approval. FT FR 6114-3.2



## WOMEN'S WORK COAT

Article No.: 06154FT01-WC-W

### STYLE & DESIGN SPECIFICATIONS



#### COLOURS



#### SIZE CHART

S	M	L	XL	2XL	3XL	4XL	--	--
36-38	40-42	44-46	48-50	52-54	56-58	60-62	--	--

#### PPE CUSTOMIZATION PROGRAM

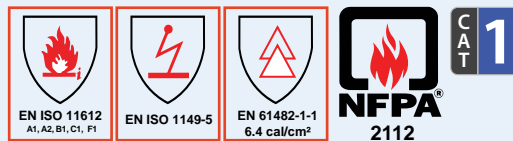
- Style and colour as per Client's requirements can be produced.
- Computerized embroidered company logo, name badges & job designation.
- EN 471 High-Viz Reflective Tape



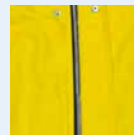
#### PACKING

Each piece in polythene cover and 20 pcs. in seaworthy carton

#### INTERNATIONAL STANDARDS



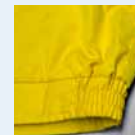
#### COMPONENTS



Heavy duty metallic zipper, snap button & storm flap closure



Elastic cuff



Elastic side waist

**TARGA**®



A PRODUCT OF



Doc. Control:	Rev.: 3.2	Date: April 2, 2016
---------------	-----------	---------------------

This Article Data Sheet (ADS) is designed and produced by FLOWTRONIX (FT) covered under the intellectual property law. Any reproduction in whole or in part is strictly prohibited without written approval. FT FR 6114-3.2