



WOMEN'S WORK TROUSER

Article No.: 0407FT01-W

Flash Armor® inherently flame-retardant and high temperature resistant garments do not support combustion in the air, melt or drip due to their molecular structure and its flame retardant characteristics cannot be washed away. Our range is designed to cater for working conditions around the world as garments are offered in various designs and options.

Flame resistant clothing made with **Flash Armor**® provides valuable peace-of-mind, which enables those who wear it to focus on the job at-hand & perform to their fullest potential.



A breathable workwear with properties of inherent heat & flame retardant. This garment is a preferred choice of people working from the oil & gas, petrochemical, refinery industries, as well as an excellent choice for electric and power generation industries.

- Inherently flame resistant** – FR properties are built in and won't wash or wear out.
- Comfortable to wear** - Soft & breathable. Roomy sizing patterns allow for a great fit.
- Exceptional durability** – Outstanding laundered appearance - Fabric retains its like new look and maintains permanent pressed appearance.
- Excellent Value** – Long life cycle & great durability.

COMPOSITION

Fabric Grade: Dupont™ Nomex® Delta C.A. (Comfort)
Composition: 93% Nomex, 5% Kevlar, 2% P140 (Antistatic)
Fabric Weight: 4.5 oz or 150 gsm

STYLE & DESIGN

- Heavy duty metallic zipper, hook & button closure
- Two front deep inset pockets
- Two large rear welt pockets with flap
- Belt loops
- Bar tacked stress points
- Pleated front & permanent sewn crease line
- Diamond crotch allowing maximum body movement
- Double stitched with Nomex® thread
- Colour fastness 4-5 & Easy care



PPE CUSTOMIZATION PROGRAM



INTERNATIONAL STANDARDS

- EN ISO 11612:2008 (A1 - Limited Flame Spread, B1 - Convective Heat, C1 - Radiant Heat)
- EN 1149-5:2008
- NFPA-2112
- ASTM D 6413-99
- ASTM D 737
- ATPV - CAT 1



Doc. Control:	Rev.:	Date:
	3.2	March 28, 2016

This Article Data Sheet (ADS) is designed and produced by FLOWTRONIX (FT) covered under the intellectual property law. Any reproduction in whole or in part is strictly prohibited without written approval. FT FR 6204-3.2

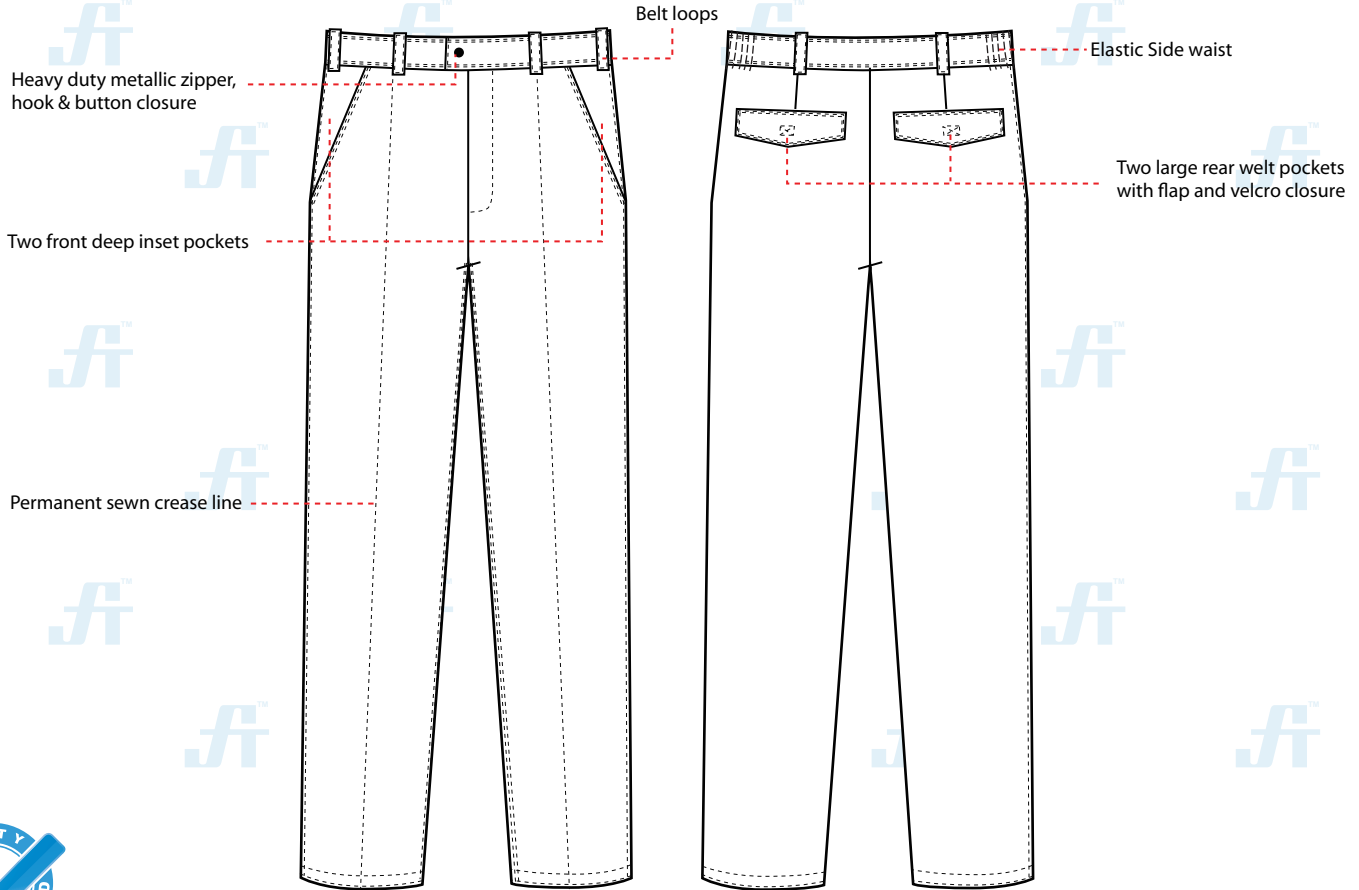




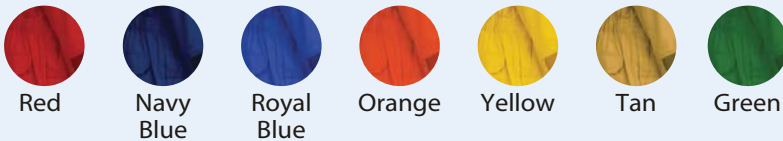
WOMEN'S WORK TROUSER

Article No.: 0407FT01-W

STYLE & DESIGN SPECIFICATIONS



COLOURS



INTERNATIONAL STANDARDS



SIZE CHART

Size	24	26	28	30	32	34	36	38	40	42	44	46	48	50	52	54	56	58	60	62
Waist	26"	28"	30"	32"	34"	36"	38"	40"	42"	44"	46"	48"	50"	52"	54"	56"	58"	60"	62"	64"
Inseam	30.5"	30.5"	31"	31"	31.5"	31.5"	31.5"	31.5"	31.5"	31.5"	31.5"	31.5"	31.5"	31.5"	31.5"	31.5"	32"	32"	32"	32"

PPE CUSTOMIZATION PROGRAM

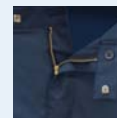


- Style and colour as per Client's requirements can be produced.
- Computerized embroidered company logo, name badges & job designation.
- EN 471 High-Viz Reflective Tape

PACKING

Each piece in polythene cover and 20 pcs. in seaworthy carton

COMPONENTS



Heavy duty metallic zipper, hook & button closure



Pleated front & permanent sewn crease line



Diamond crotch allowing maximum body movement

Doc. Control:	Rev.:	Date:
	3.2	March 31, 2016

This Article Data Sheet (ADS) is designed and produced by FLOWTRONIX (FT) covered under the intellectual property law. Any reproduction in whole or in part is strictly prohibited without written approval. FT FR 6204-3.2

