

# HUGHES


**SAFETY-SHOWERS**

## WALL MOUNTED EMERGENCY EYE/FACE WASH

**Article No.: STD-75G**

Designed in accordance with ANSI and EU standards, this wall-mounted eye/face wash with stainless steel open bowl is intended for indoor use but may, where practical, be located outdoors in warmer climates.

- Twin spray nozzles protected by dust covers which lift off when eye wash is activated
- Fine mesh strainers and individual flow controllers provide a gentle flow of aerated water
- Flow regulator valve ensures an optimum water flow



Open ABS plastic bowl, wall-mounted emergency eye/face wash featuring twin spray nozzles protected by dust covers. When activated via the push plate, the water jets lift off the dust covers. The eye wash diffusers are fitted with fine mesh strainers and individual flow controllers designed to give a gentle flow of aerated water.

### TECHNICAL SPECIFICATION

#### Materials of Construction

Eye/Face Wash Bowl      ABS Plastic

#### Services

Water Inlet      ½" Female BSP  
 Design Operating Pressure      2.0 to 6 BAR G (29 to 87psi)  
 (Higher supply pressures accommodated with the incorporation of the optional Pressure Reducing Valve)  
 Test Pressure      10.3 BAR G (149 PSI)  
 Minimum Flow Rates      Eye/Face Wash:  
 12 litres/mins min. (3 US Gallons)

#### Environmental Operating Temperature

Min. Ambient Operating Temp      5° C (41° F)  
 Max. Ambient Operating Temp      35° C (95° F)

#### Activation/Operation

Eye/facewash      Push plate operated  
 (optional foot treadle control for hands free operation)

#### Weights and Dimensions

Dimensions (WxDxH)      430mm (16.9in) x 400mm  
 (15.7in) x 290mm (11.4in)  
 Weight      4kg (9lb)

Doc. Control:	Rev.:	Date:
	3.2	April 12, 2016

This Article Data Sheet (ADS) is designed and produced by FLOWTRONIX (FT) covered under the intellectual property law. Any reproduction in whole or in part is strictly prohibited without written approval. FT ES 1542-3.2

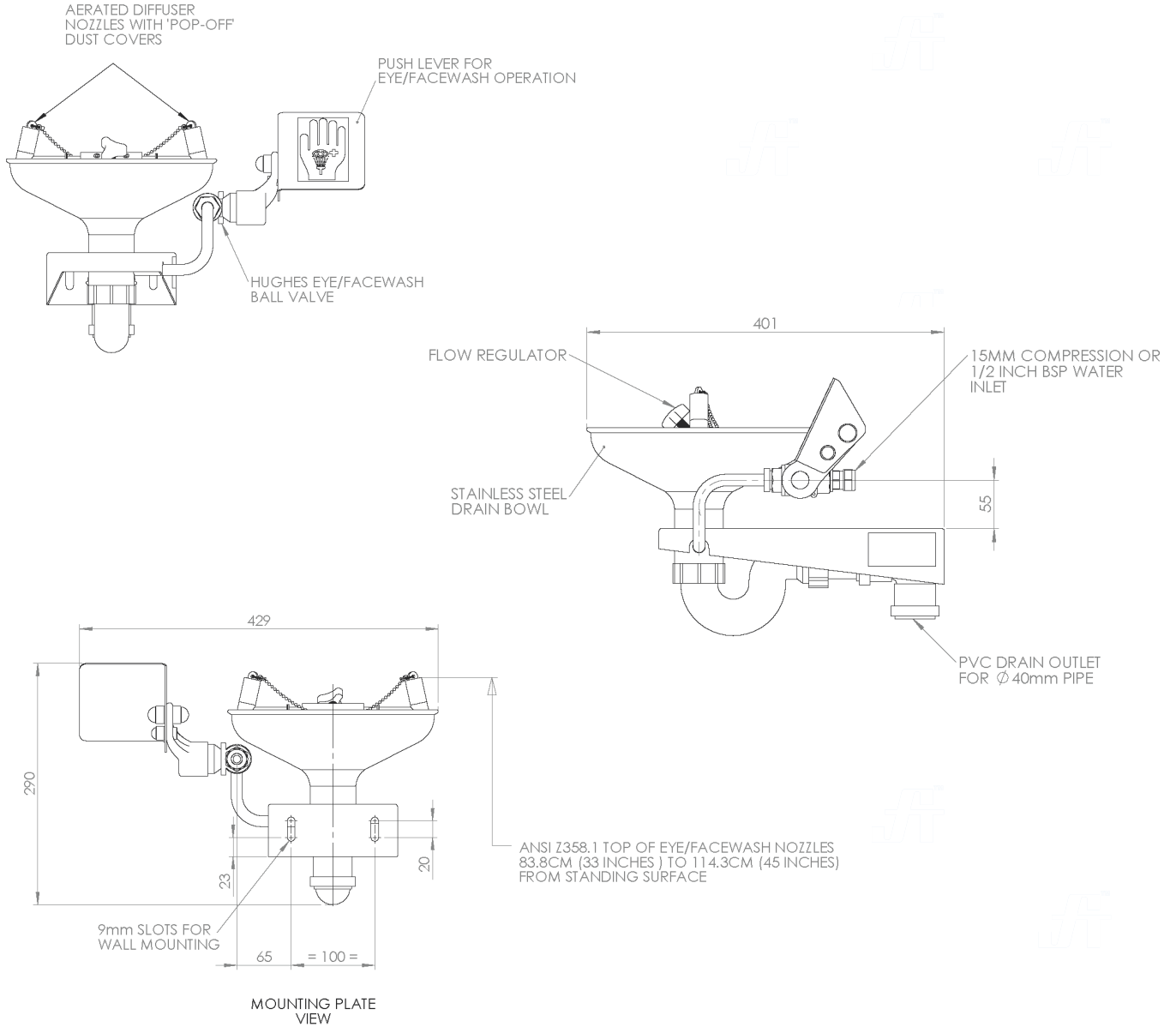


# HUGHES

**SAFETY-SHOWERS**

## WALL MOUNTED EMERGENCY EYE/FACE WASH

Article No.: STD-75G



### STANDARDS

- Allocate a location reference for ease of identification
- All units to be activated weekly - **ANSI Z358.1 2014**
- Safety shower/eye wash must be located within 10 seconds or 15 metres of a potential hazard - **ANSI Z358.1 2014**
- The unit must be located on the same level as the hazard and the path of travel & local area should be free from obstructions - **ANSI Z358.1 2014**
- The unit should be well lit and identified with highly visible signage to **BS EN ISO 7010 - ANSI Z358.1 2014**
- Flush for sufficient duration to purge the supply pipe with fresh water
- Replace worn or illegible safety signs and stickers
- Sign & date service tag when service completed

Doc. Control:	Rev.:	Date:
	3.2	April 12, 2016

This Article Data Sheet (ADS) is designed and produced by FLOWTRONIX (FT) covered under the intellectual property law. Any reproduction in whole or in part is strictly prohibited without written approval. FT ES 1542-3.2

